

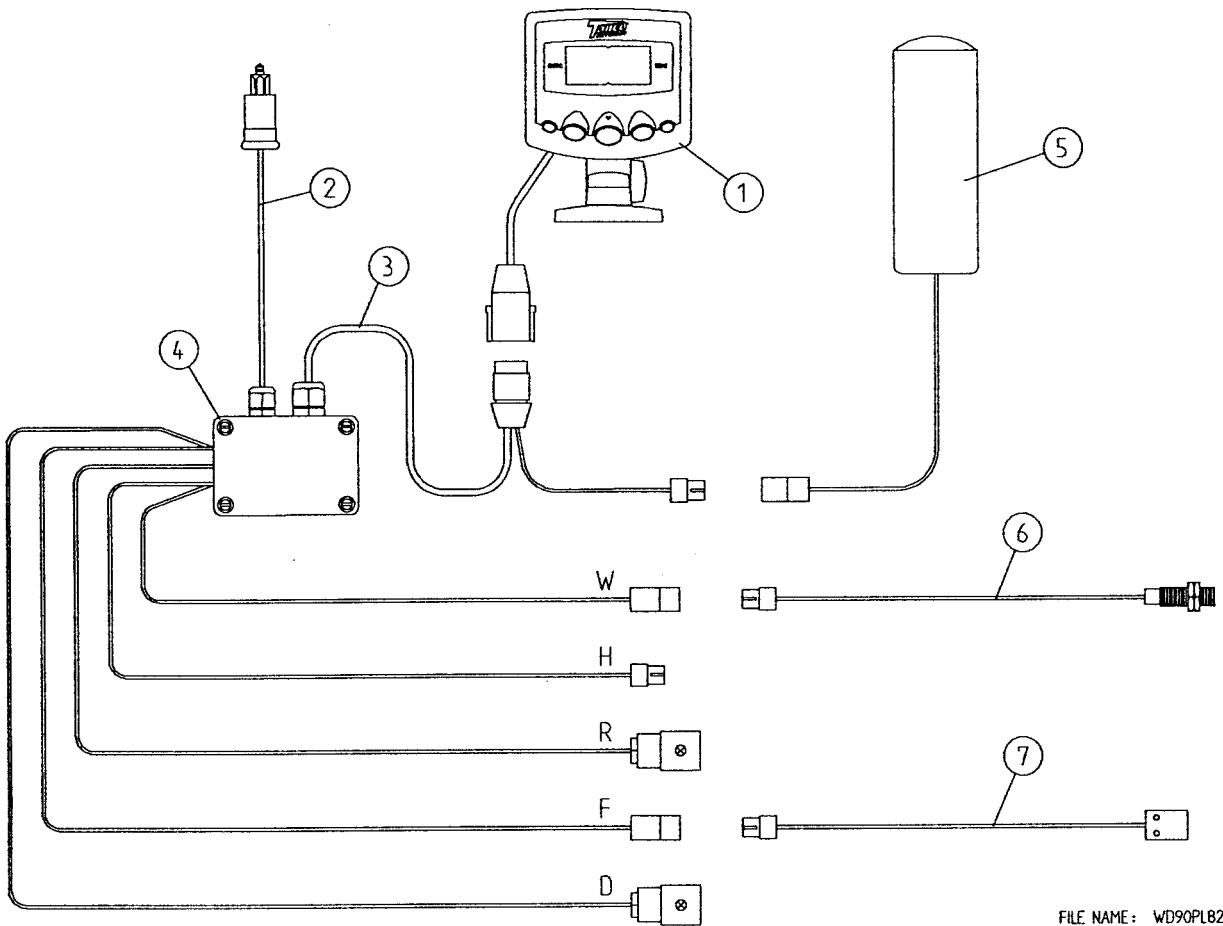
**TANCO AUTOWRAP**  
**580-S / 580-A 2003**  
**PARTS LIST**  
**WD66-580-P-M0303**

Tanco Autowrap 580-S / 580-A  
Parts List

Table of Contents

Electrical components (580-S) RDS	1
Electrical components (580-S) LYKKETRONIC	2
Electrical components (580-A)	3
Hydraulic components (580-S)	4
Parts list for above	5
Hydraulic components (580-A)	7
Parts list for above	8
Constant Indexing drive	9
Parts list for above	10
Autowrap assembly	11
Parts list for above	12
Turntable chain drive	14
Parts list for above	15
Lift Arm	16
Parts list for above	17
Valve & Cover plate (580-S)	18
Valves / Junction box / Filter (580-A)	19
Dispenser Mast	20
Parts list for above	21
Film Dispenser	22
Parts list for above	23
Cut & Start unit	24
Parts list for above	25
Turntable locking arrangement	26
Sensor & Magnet mounting	27
Hydraulic bale ramp	28
Lighting kit	29

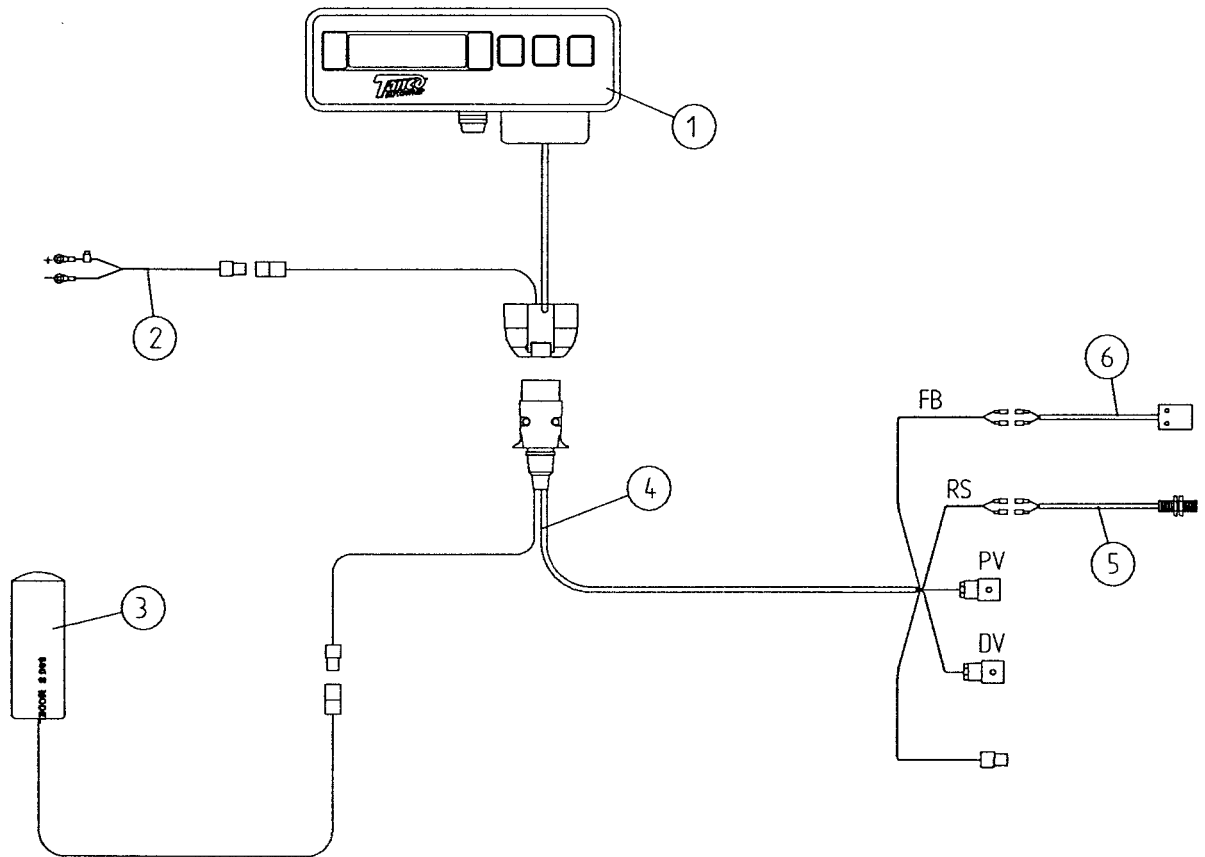
TANCO AUTOWRAP 580 S MODEL  
ELECTRICAL COMPONENTS (RDS)



FILE NAME: WD90PLB2

ITEM No	DESCRIPTION	QTY	PART No
1	Monitor c/w bracket & cable	1	D606R-S
2	Power Cable	1	D606R-PC
3	Communication Cable	1	D606R-CC
4	Junction box c/w Cables	1	D606R-JB
5	Joystick handle c/w microswitch	1	Z003-580-009
6	Wrap sensor / cable	1	D606C-WS
7	Film break sensor / cable	1	D606C-FB

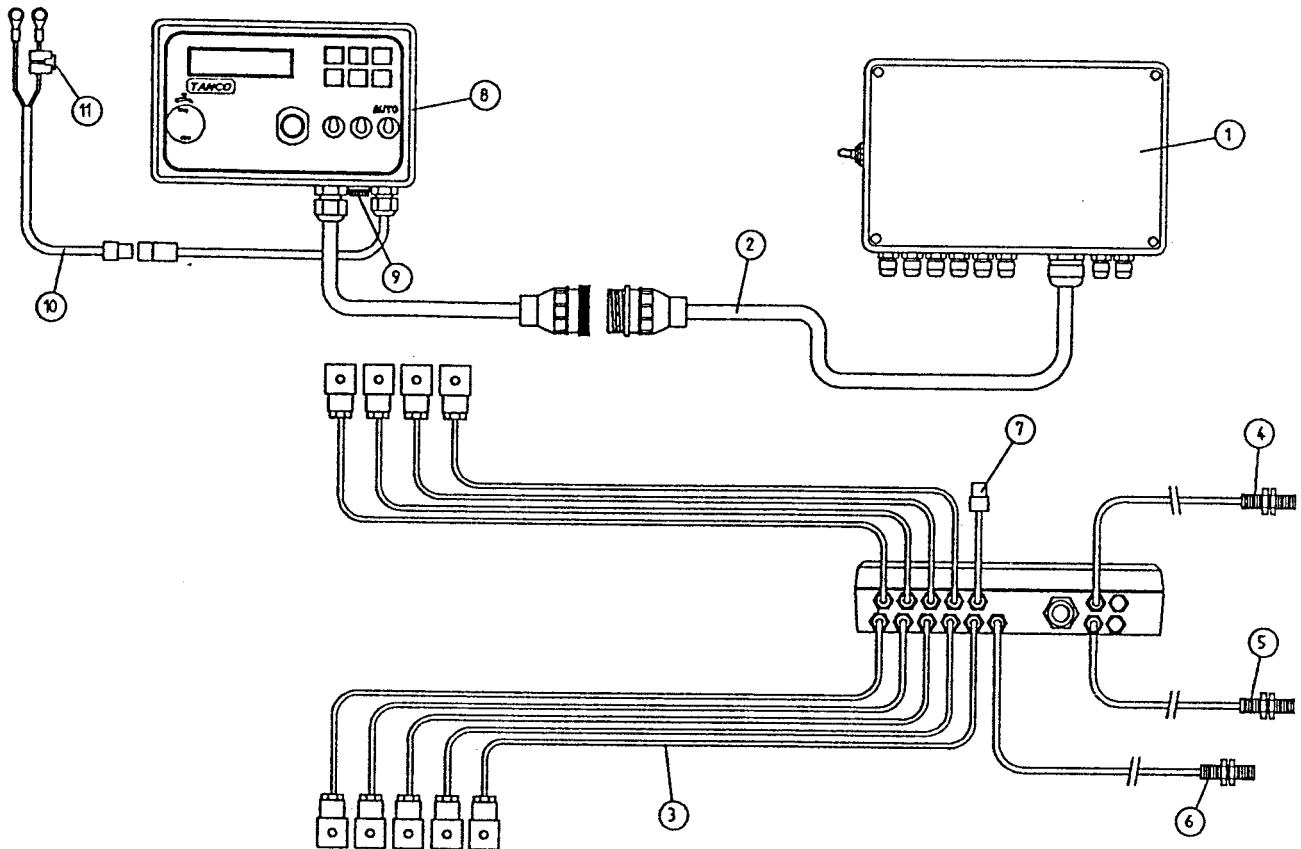
TANCO AUTOWRAP 580 S MODEL  
ELECTRICAL COMPONENTS (LYKKETRONIC)



FILE NAME: WD90PL82

ITEM No	DESCRIPTION	QTY	PART No
1	Monitor c/w cables & socket	1	D606C-S
2	Power Cable	1	D606C-SPC
3	Joystick handle c/w microswitch	1	Z003-580-009
4	Cable assembly c/w plug	1	D606C-SCA
5	Wrap sensor / cable	1	D606C-WS
6	Film break sensor / cable	1	D606C-FB

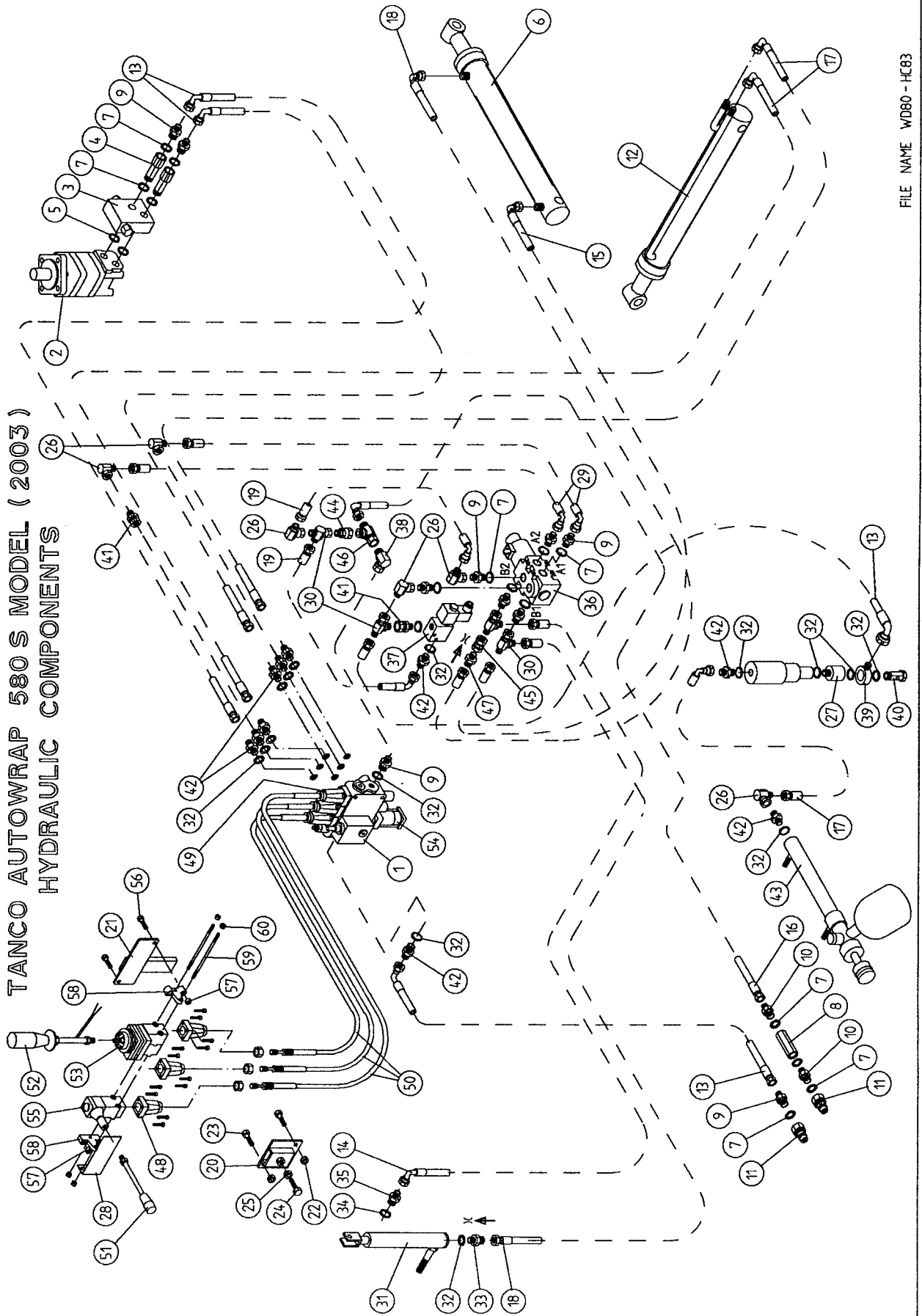
# TANCO AUTOWRAP 580A MODEL ELECTRIC COMPONENTS



## PARTS LIST

ITEM No.	DESCRIPTION	QTY.	PART No.
1	JUNCTION BOX	1	ZLY-580A
2	24 CORE INTERCONNECTING LEAD C/W CONNECTORS	1	ZLY-P02
3	LOOM FOR VALVE C/W HERSCHMAN	9	ZLY-P03
4	LIFT ARM SENSOR	1	ZLY-P04
5	TIP SENSOR	1	ZLY-P05
6	ROTATE SENSOR	1	ZLY-P06
7	SYSTEM PRESSURE LEAD	1	ZLY-P07
8	CONTROL BOX (580A)	1	D606C-A
9	FUSE 16AMP	1	ZLY-P09
10	MAIN BATTERY LEAD	1	ZLY-P10
11	INLINE FUSE	1	ZLY-P11

TANCO AUTOWRAP 580 S MODEL (2003)  
HYDRAULIC COMPONENTS



TANCO AUTOWRAP 580 S MODEL  
HYDRAULIC COMPONENTS  
PARTS LIST

PART No	DESCRIPTION	QTY	PART No
1	3 Bank Spool Valve (Walvoil)	1	
2	Hydraulic Motor	1	Z01-02-RF200
2A	Seal kit for above Hydraulic motor	1	Z01-RF-200
3	Cross line relief valve	1	Z01-03-004
4	1/2" BSP Bottom banjo bolt	2	Z01-03-002B
5	Copper washer	2	Z01-04-15
6	Hydraulic Ram (For Tipping frame)	1	Z01-01AR687
6A	Seal kit for above Hydraulic ram	1	Z01-Z01
7	1/2" Dowty washer	22	Z01-04-03
8	1/2" Non return valve	1	Z01-03-017
9	1/2" x 3/8" Adaptor	10	Z01-06-06-08
10	1/2" x 1/2" Adaptor	2	Z01-06-08-08
11	1/2" Male end Q/R Coupling	2	Z01-15-081
12	Hydraulic Ram (For Lift arm)	1	Z01-01-AW
12A	Seal kit for above Hydraulic ram	1	Z01-Y01
13	108" St/90 3/8" D/W Hose	4	Z38-R2-108-S9
14	72" St/90 3/8" D/W Hose	1	Z38-R2-72-S9
15	48" St/90 3/8" D/W Hose	1	Z38-R2-48-S9
16	108" St/90 1/2" D/W Hose	1	Z12-R2-108-S9
17	84" St/90 3/8" D/W Hose	3	Z38-R2-84-S9
18	60" St/90 3/8" D/W Hose	2	Z38-R2-60-S9
19	12" St/90 3/8" D/W Hose	2	Z38-R2-12-S9
20	Actuator mounting bracket (Lower)	1	WD66-AML
21	Actuator mounting bracket (Upper)	1	WD67-AMU
22	M.10 Locknut	2	Z23-10
23	M.10 x 40 Hex set	2	Z26-064S
24	M.12 x 40 Hex set	1	Z26-084S
25	M.12 Hex nut	1	Z18-12
26	3/8" Male x 3/8" Female 90 Elbow	6	Z01-14-015
27	Rotary Coupling	1	Z01-01-AWR
28	Sticker mounting plate	1	WD60-794
29	30" St/90 3/8" D/W Hose	2	Z38-R2-30-S9
30	3/8" Female x 3/8" Male/Male" T" Piece	4	Z01-12-002
31	Hydraulic Ram (Pull down)	1	Z01-01-AW25
31A	Seal kit for above Hydraulic ram	1	Z01-AW25
32	3/8" Dowty washer	16	Z01-04-02
33	3/8" x 3/8" Adaptor fitted with 0.06" restrictor	1	Z01-03-40
34	1/4" Dowty washer	1	Z01-04-01
35	1/4" x 3/8" Adaptor	1	Z01-06-04-06
36	6 Port Solenoid valve	1	Z01-03-105-06
37	2 Port Solenoid Poppet valve	1	Z01-03-103
38	1/2" Male x 1/2" Female 90 Elbow	1	Z01-14-016
39	3/8" Banjo coupling	1	Z01-19-062

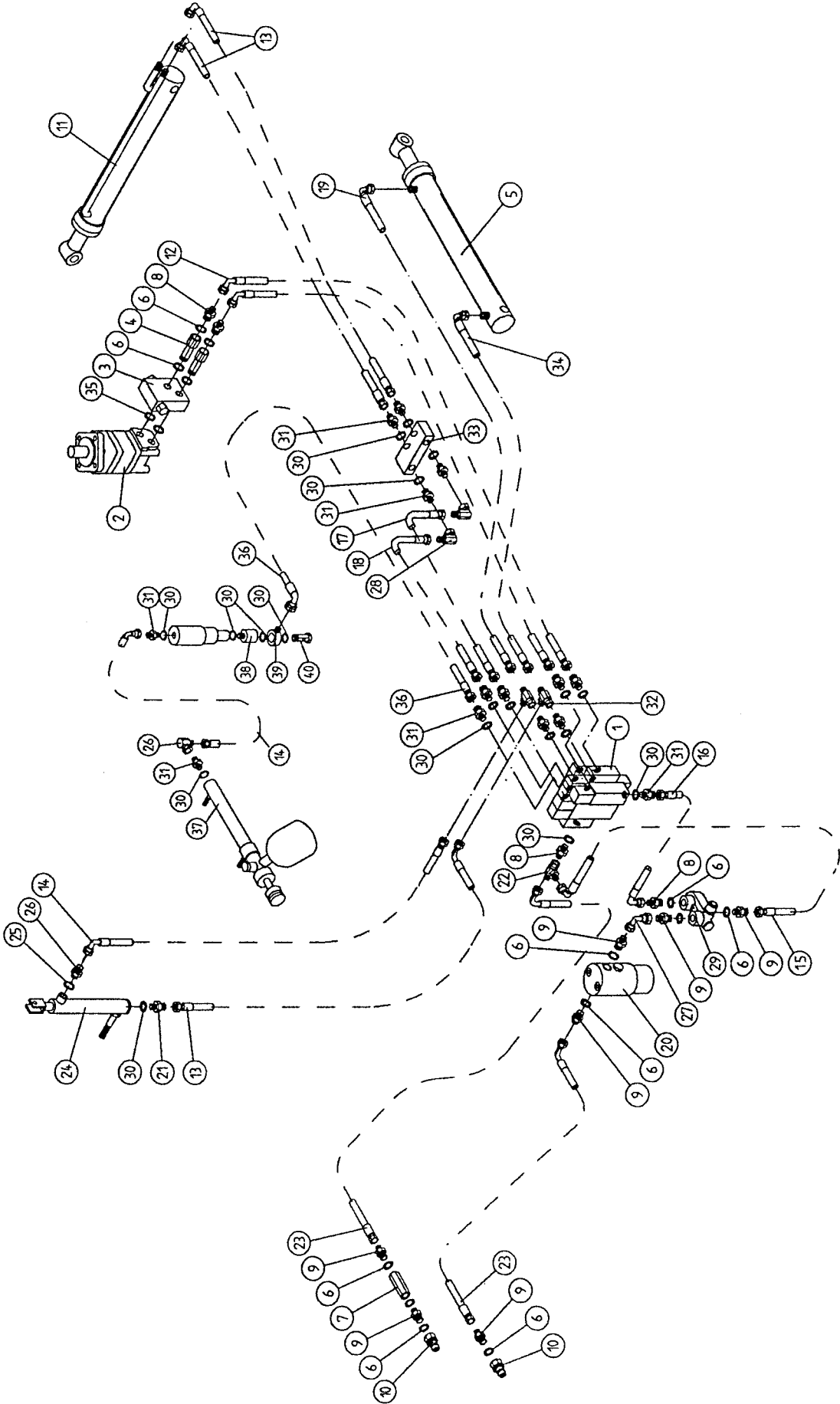
TANCO AUTOWRAP 580 S MODEL  
HYDRAULIC COMPONENTS  
PARTS LIST

PART No	DESCRIPTION	QTY	PART No
40	3/8" Single top Banjo bolt	1	Z01-20-062
41	3/8" Male/Female Adaptor	2	Z01-05-06-06
42	3/8" Male/Male Adaptor	10	Z01-06-06-06
43	Hydraulic Ram (Cut & Start)	1	Z01-01-AWH9
43A	Seal kit for above Hydraulic ram	1	Z01-AWH
44	1/2" Female x 3/8" Male Adaptor	1	Z01-05-06-08
45	3/8" Female/Female Adaptor	1	Z01-05-F6-F6
46	1/2" Female x 1/2" Male/Male "T" Piece	1	Z01-12-003
47	3/8" x 3/8" Adaptor fitted with 2mm restrictor	1	Z01-03-395
48	Actuator couple kit	3	Z003-580-004
49	Valve couple kit	3	Z003-580-005
50	CG 3500 Cables	3	Z003-580-006
51	Std. Handle	1	Z003-580-007
52	Handle c/w Microswitch	1	Z003-580-008
53	Joystick (complete)	1	Z003-580-009
54	Walvoil Autostop	1	Z003-580-010
55	Actuator	1	Z003-580-011
56	M.8 x 35 Hex bolt	2	Z26-042B
57	M.8 Locknut	2	Z23-08
58	Side Bracket	2	Z003-580-012
59	Tie Bolt	2	Z003-580-013
60	M.6 Locknut	4	Z23-06





TANCO AUTOWRAP 580 A MODEL  
HYDRAULIC COMPONENTS



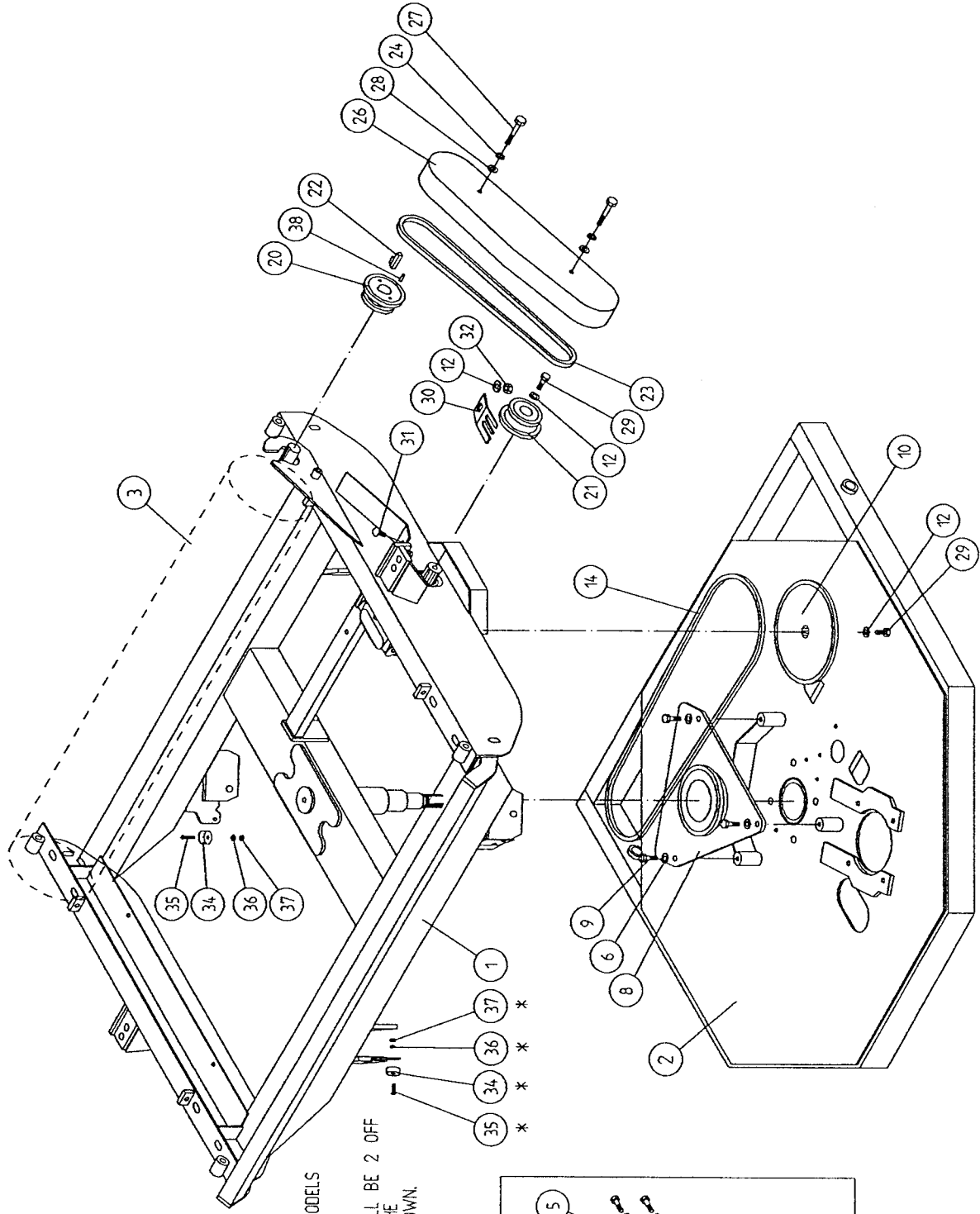
**TANCO AUTOWRAP 580A MODEL  
HYDRAULIC COMPONENTS**

**PARTS LIST**

ITEM NO.	DESCRIPTION	QTY	PART-NO
1	4 BANK SOLENOID VALVE	1	Z01-03-A550
2	HYDRAULIC MOTOR C.L.	1	Z01-02-RF200
2A	SEAL KIT FOR ABOVE RAM	1	Z01-RF-200
3	CROSS LINE RELIEF VALVE	1	Z01-03-004
4	1/2" B.S.P. BOTTOM BANJO BOLT (SPECIAL)	2	Z01-03-002B
5	HYDRULIC RAM (TIPPING FRAME)	1	Z01-01-AR687
5A	SEAL KIT FOR ABOVE RAM	1	Z01-Z01
6	1/2" DOWTY WASHER	12	Z01 -04-03
7	1/2" NON RETURN VALVE	1	Z01-03-017
8	1/2" x 3/8" ADAPTOR	4	Z01-06-06-08
9	1/2" x 1/2" ADAPTOR	8	Z01-06-08-08
10	1/2" MALE END Q/R COUPLING	2	Z01-15-081
11	HYD.RAM (FOR LIFT ARM)	1	Z01-01-AW
11A	SEAL KIT FOR ABOVE RAM	1	Z01-Y01
12	108" ST/90 3/8" D/W HOSE	3	Z38-R2-108-S9
13	72" ST/90 3/8" D/W HOSE	3	Z38-R2-72-S9
14	84" ST/90 3/8" D/W HOSE	1	Z38-R2-84-S9
15	24" ST/90 1/2" D/W HOSE	1	ZI 2-R2-24-S9
16	24" ST/90 3/8" D/W HOSE	1	Z38-R2-24-S9
17	12" ST/ST 3/8" D/W HOSE	2	Z38-R2-12-SS
18	9" ST/ST 3/8" D/W HOSE	1	Z38-R2-9-SS
19	48" ST/90 3/8" D/W HOSE	1	Z38-R2-48-S9
20	FILTER	1	Z01-24-08
20A	FILTER ELEMENT	1	Z01-24-08E
21	3/8" x 3/8" ADAPTOR FITTED WITH 0.06" RESTRICTOR.	1	Z01-03-40
22	1/2" MALE x 1/2" MALE x 1/2" FEMALE "T" PIECE	1	Z01-12-003
23	108" ST/90 1/2" D/W HOSE	2	ZI 2-R2-108-S9
24	HYD. RAM D/A (PULL DOWN ARM)	1	Z01-01-AW25
24A	SEAL KIT FOR ABOVE RAM	1	Z01-AW25
25	1/4" DOWTY WASHER	1	ZO 1 -04-01
26	1/4" x 3/8" ADAPTOR	1	Z01 -06-04-06
27	1/2" FEMALE x 1/2" FEMALE 90 ELBOW	1	Z01-14-018
28	3/8" MALE/FEMALE 90 ELBOW	3	Z01-14-015
29	IN LINE FLOW DIVIDER	1	Z01-03-10-A6
30	3/8" DOWTY WASHER	18	Z01-04-02
31	3/8" x 3/8" ADAPTOR	14	Z01-06-06-06
32	3/8" MALE x 3/8" MALE x 3/8" FEMALE "T" PIECE	2	Z01-12-002
33	OVER CENTRE VALVE	1	Z01-03-10-A8
34	30" ST/90 3/8" D/W HOSE	2	Z38-R2-30-S9
35	COPPER WASHER	2	Z01-04-15
36	96" ST/90 3/8" D/W HOSE	1	Z38-R2-96-SG
37	CUT & START RAM	1	Z01-01-AWH9
37A	SEAL KIT FOR ABOVE RAM	1	Z01-AWH
38	ROTARY COUPLING	1	Z01-02-ANR
39	3/8" BANJO COUPLING	1	Z01-19-062
40	3/8" SINGLE TOP BANJO BOLT	1	Z01-20-062

TANCO AUTOWRAP

CONSTANT INDEXING DRIVE ASSY



ITEMS MARKED WITH \* ARE POSITIONED AT THIS SIDE OF THE MACHINE ON "S" MODELS AND 1 OFF EACH ITEM IS REQUIRED ONLY.

ON "A" MACHINES QUANTITY REQUIRED WILL BE 2 OFF EACH ITEM AND ARE POSITIONED AT THE OPPOSITE SIDE OF THE MACHINE AS SHOWN.

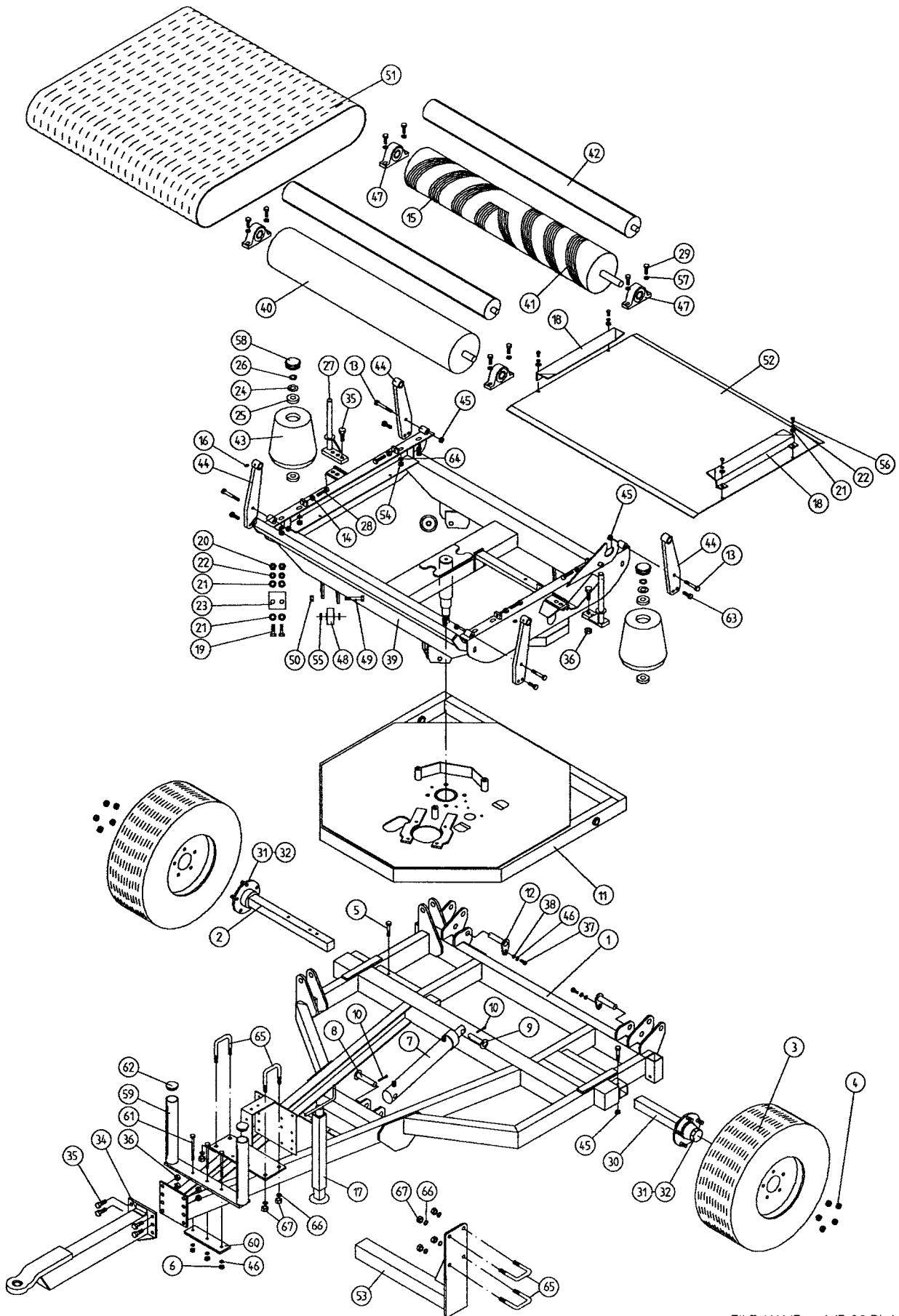
**TANCO AUTOWRAP  
CONSTANT INDEXING DRIVE ASSEMBLY**

**PARTS LIST**

ITEM NO.	DESCRIPTION	QTY.	PART-NO
1	TURNTABLE ASSY.	1	WD67-TA
2	TIPPING FRAME ASSY.	1	WD67-TF
3	DRIVE ROLLER ASSY.	1	WD66-BRD
4	GEAR BOX	1	Z01-25-300
4A	GEAR BOX SEAL KIT	1	Z01-25-300S
5	M12 HEX HD SET x 30mm LONG	4	Z26-082S
6	12mm DIA SPRING WASHER	7	Z12-02-12
7	CHAIN TENSIONER	1	WD60-CT
8	CENTRE SPROCKET ASSY 27 TOOTH	1	WD64-CSA
9	M12 HEX HD SET x 25mm LONG	3	Z26-081S
10	46 TOOTH SPROCKET	1	Z06-D64-46S
11	M10 HEX HD SET x 25mm LONG	1	Z26-0611S
12	10mm DIA SPRING WASHER	4	Z12-02-10
13	RETAINING COLLAR	1	WD623-071
14	CHAIN 3/4" PITCH X 87 PITCHES	1	Z09-AW-5
15	ROSTA TENSIONING UNIT ARM	1	Z06-454
17	M10 HEX HD BOLT x 65mm LONG	1	Z26-0671B
19	M10 LOCKNUT	1	Z23-10
20	SPROCKET DOUBLE SIMPLEX 13T/16T KEYED	1	Z06-D64-131
21	SPROCKET DOUBLE SIMPLEX 13T/16T SPLINED	1	Z06-D65-131
22	KEY 5/16"x 5/16" x 32mm LONG	1	WD623-K32
23	CHAIN 3/4" PITCH X 6 PITCHES	1	Z09-AW-3
24	1/211 DIA STAR WASHER	2	Z10-01-121
26	CHAIN GUARD	1	WD67-CGC
27	M10 HEX HD SET x 70mm LONG	2	Z26-068B
28	10mm DIA FLAT WASHER	2	Z10-02-10
29	M10 HEX HD SET x 30mm LONG	2	Z26-062S
30	CHAIN STRIPPER	1	WD67-053
31	M10 CUP SQ. SCREW x 30mm LONG	1	Z13-112
32	M10 HEX NUT	1	Z18-10
34*	MAGNET	2	D6043
35*	M6 CSK HD SET x 35mm LONG	2	Z13-132
36*	6mm DIA FLAT WASHER	2	Z11-02-06
37*	M6 LOCKNUT	2	Z23-06
38	SPIRAL PIN	2	Z03-23-062

NOTE: ON "S" MACHINES QUANTITY REQUIRED ON  
ITEMS MARKED WITH \* WILL BE 1 OFF

# TANCO AUTOWRAP 380S/580S/580A MODELS



FILE NAME: WD 80 PL 44

TANCO AUTOWRAP 380 S / 580 S / 580 A MODEL  
PARTS LIST

PART No	DESCRIPTION	QTY	PART No
1	Chassis assembly	1	WD67-CHA
2	Stub axle (Long)	1	Z04-0336
3	Wheels (Standard width) (Wide)	2	Z04-03 Z04-04
4	Wheel nuts	10	M22AWNA
5	Bissel pin	2	Z03-22-AW82
6	M.10 Hex nut	3	Z18-10
7	Hydraulic ram	1	Z01-01-AR87
8	Ram bottom pivot pin	1	Z03-02-330
9	Ram top pivot pin	1	Z03-03-50
10	2" x 1/4" split pin	2	Z03-21-29
11	Tipping frame assembly	1	WD67-TF
12	Tipping frame pivot pin c/w Grease nipple	2	Z03-01-905 Z39-60
13	M.12 x 80 Hex bolt	4	Z26-0901B
14	M.12 Hex nut	4	Z18-12
15	Grip face kit	2	Z05-02-AW49
16	1/8" B.S.P. St Grease nipple	4	Z39-60
17	Screw jack assembly (Welded on)	1	Z49-87
18	Belt guide assembly	2	WD66-BG
19	M.8 x 20 Hex set	4	Z26-039S
20	M.8 Hex nut	14	Z18-08
21	8 mm dia flat washer (Mud flap)	8	Z11-02-081
22	8 mm dia spring washer	12	Z12-02-08
23	Scraper	2	WD60-711
24	Thrust washer	2	WD60-292
25	Bearing (25mm I.D.)	4	Z06-AWRB-93
26	Circlip	2	Z28-525
27	End roller mounting bracket	2	WD66-ERM
28	M.12 x 60 Hex set	4	Z26-088S
29	M.14 x 50 Hex bolt	8	Z26-104B
30	Stub axle (Short)	1	Z04-032
31	Inner Bearings	2	M22AB-209
32	Outer Bearings	2	M22AB-206
33	4 mm "R" clip	2	Z36-02
34	Ring hitch assembly (Long)	1	WD65-HIT
35	M.16 x 50 Hex set	6	ZZG-124S
36	M.16 Locknut	6	Z23-16
37	M.10 x 25 Hex set	2	Z26-061S
38	10 mm dia flat washer	2	Z11-02-10
39	Turntable assembly	1	WD67-TA
40	Roller assembly (Idler)	1	WD66-BRI
41	Roller assembly (Drive)	1	WD66-BRD
42	Roller assembly	2	WD66-SMR

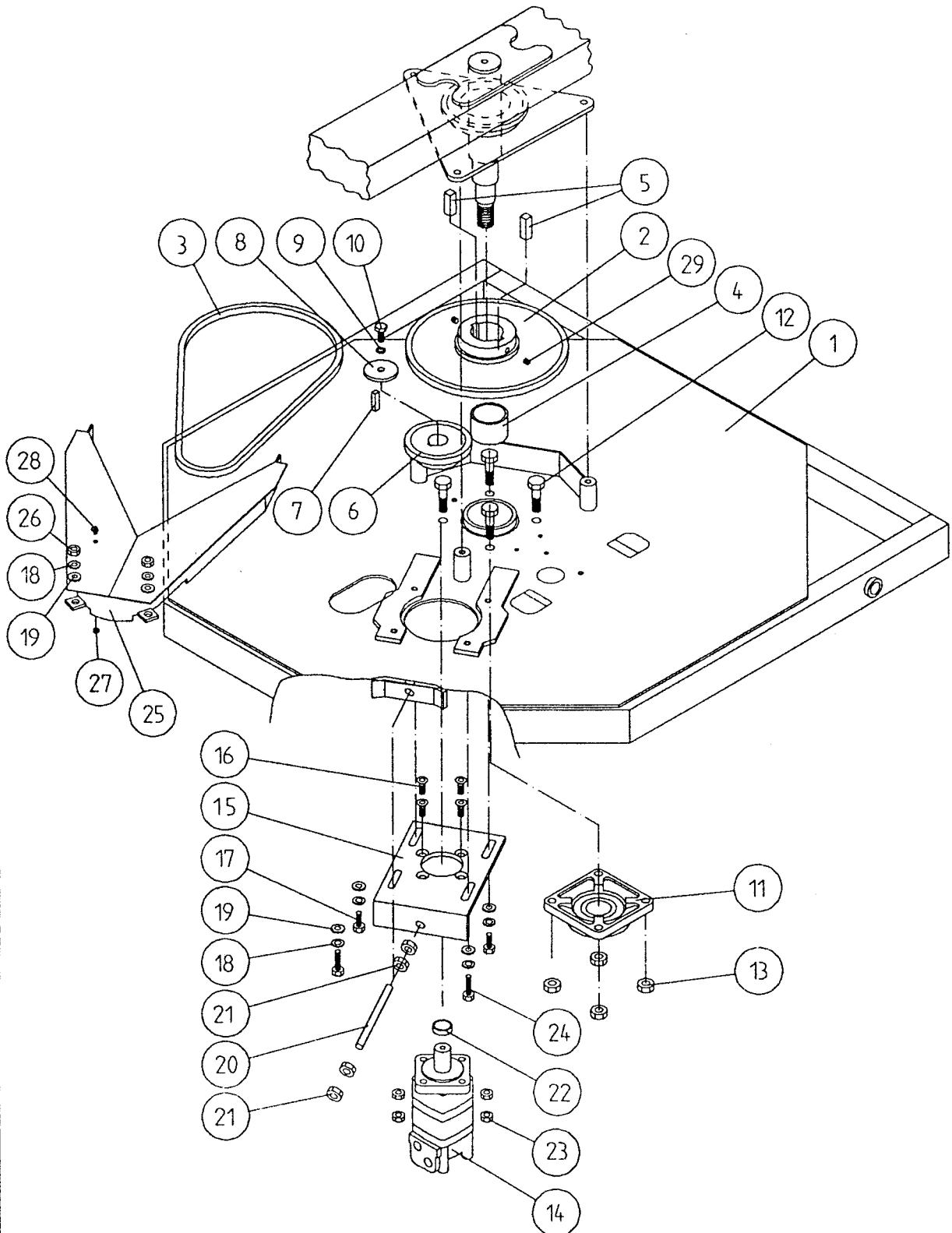
TANCO AUTOWRAP 380 S / 580 S / 580 A MODEL  
PARTS LIST

PART No	DESCRIPTION	QTY	PART No
43	End roller	2	Z06-AWR
44	Roller mounting bracket	4	WD66-RMB
45	M.12 Locknut	8	Z23-12
46	10mm dia spring washer	5	Z12-02-10
47	1 ¼" Pillow block bearing c/w cam lock collar	4	Z06-485
48	Support wheels	4	Z06-466W
49	Axle assembly c/w Grease nipple	4	ZZ03-22-AW/AX Z39-60
50	M.20 Locknut	4	Z23-20
51	6 mm Flat belt 1200 mm Wide x 2475 Long	1	Z03-03-50
52	Turntable cover plate	1	WD66-024
53	Dispenser mast mounting bracket	1	WD67-DMM
54	M.14 Hex nut	8	Z18-14
55	Spacer	8	WD67-101
56	M.8 x 30 Hex set	4	Z26-041S
57	14 mm dia flat washer	8	Z11-02-14
58	Plastic cap	2	Z06-AWRC65
59	Film transport bracket	1	WD60-FTB1
60	Clamping plate	1	WD60-933
61	M.10 x 140 Hex bolt	3	Z26-0726B
62	Plastic cap	2	Z32-081
63	M.12 x 40 Hex set	4	Z26-084S
64	14 mm dia spring washer	8	Z12-02-14
65	"U" Bolt (M.16)	4	Z35-52
66	16 mm dia spring washer	8	Z12-02-16
67	M.16 Hex nut	8	Z18-16





# TANCO AUTOWRAP TURNTABLE CHAIN DRIVE ASSEMBLY



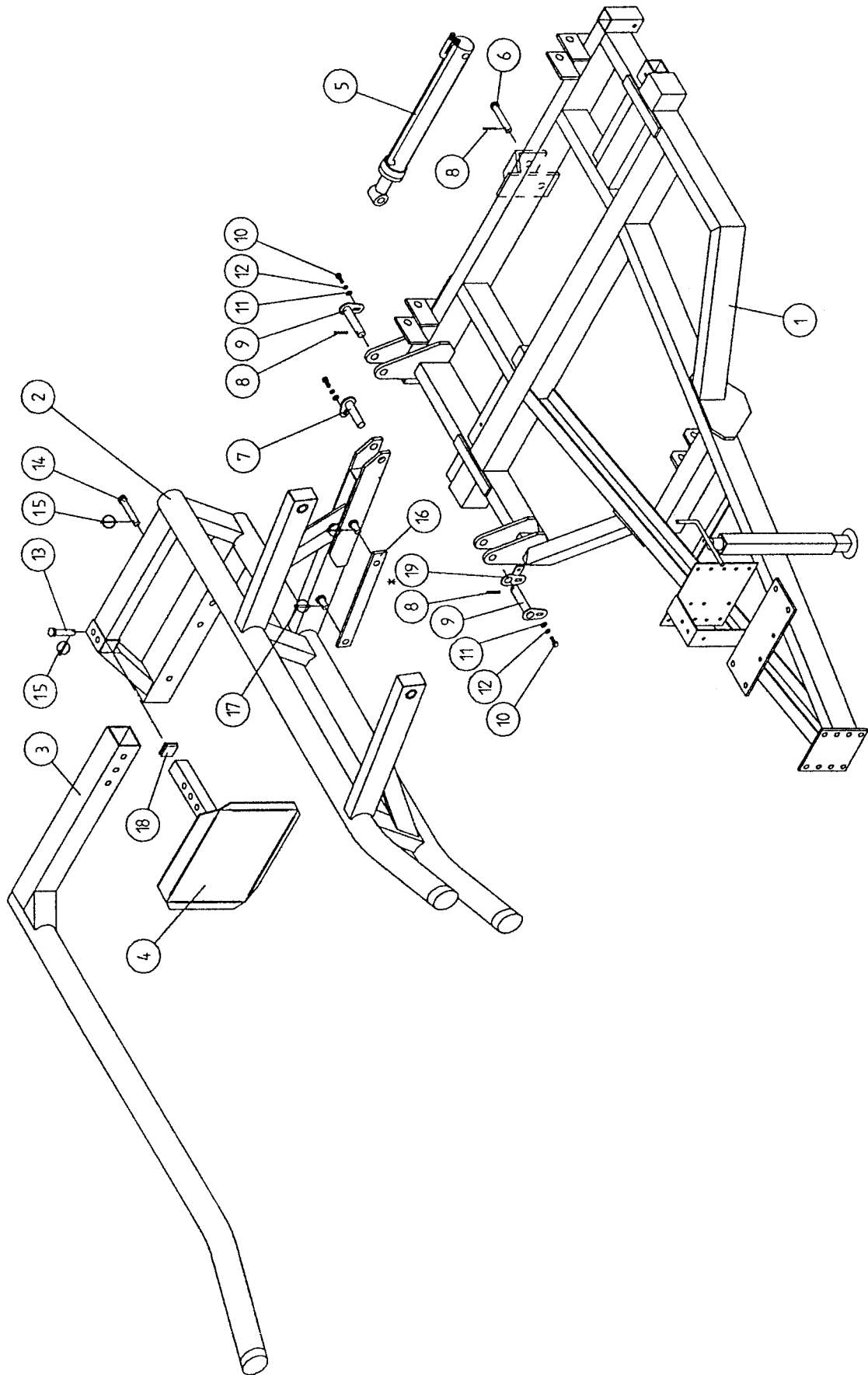
FILE NAME: WD66 PL9

**TANCO AUTOWRAP  
TURNTABLE CHAIN DRIVE ASSEMBLY**

**PARTS LIST**

ITEM NO	DESCRIPTION	QTY	PAPT NO
1	TIPPING FRAME ASSY	1	WD67-TF
2	38 TOOTH x 1" PITCH SPROCKET	1	Z06-D64-38
3	CHAIN 1" PITCH x 54 PITCHES	1	Z09-AW6
4	SPINDLE SPACER	1	WD64-040
5	KEY 5/8" SQ x 50mm LONG	2	WD64-052
6	15 TOOTH x 1" PITCH SPROCKET	1	Z06-I60-046
7	KEY 5/16" SQ x 45mm LONG	1	WD64-053.
8	LOCKING COLLAR	1	WD623-071
9	10mm DIA SPRING WASHER	1	Z12-02-10
10	3/8" UNC HEX HD SET x 1" LONG	1	Z27-023S
11	2" DIA FLANGE BEARING		
	C/W CAM LOCK COLLAR	1	Z06-49EC
12	5/8" UNF HEX HD SET x 2" LONG	4	Z31B-064
13	5/8" UNF LOCKNUT	4	Z20-10
14	HYDRAULIC MOTOR	1	ZO1-02-RF200
15	HYDRAULIC MOTOR MOUNTING PLATE	1	WD64-001
16	M12 x 50mm ALLEN HD O/S SCREW	4	Z13-5-12X50
17	M12 HEX HD SET x 30mm LONG	4	Z26-082S
18	12mm DIA SPRING WASHER	4	Z12-02-12
19	12mm DIA FLAT WASHER	4	210-02-12
20	M16 THREADED BAR x 150mm LONG	1	WD64-038
21	M16 HEX NUT	4	Z18-16
22	SPACER	1	Wi60-093
23	M12 LOCKNUTS	4	Z23-12 .
24	M12 HEX HD SET x 50mm LONG	2	Z26-086S
25	DRIVE CHAIN GUARD	2	WD66-DCG
26	M12 HEX NUT	2	Z18-12
27	M6 HEX NUT	1	Z18-06
28	M6 90 DEGREE GREASE NIPPLE	1	Z39-65
29	M12 GRUB SCREW x 16mm LONG	2	Z28-012

TANCO AUTOWRAP 380S/580S/580A MODELS  
LIFT ARM ASSEMBLY



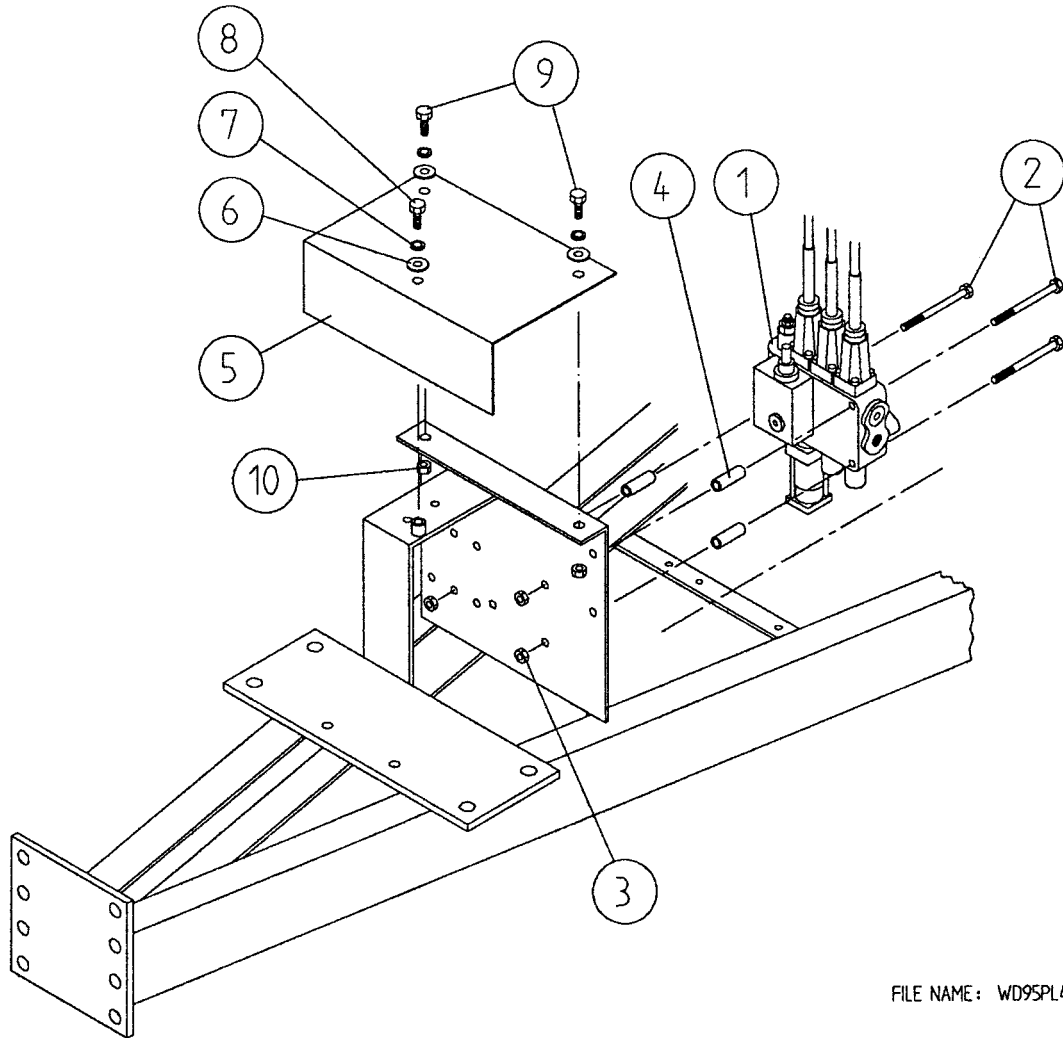
WD67-LA

TANCO AUTOWRAP 380S / 580S / 580A MODELS  
LIFT ARM AND CHASSIS

PARTS LIST

TEM NO	DESCRIPTION	QTY	PART NO.
1	CHASSIS ASSEMBLY	1	WD67-CHA
2	LIFT ARM ASSEMBLY	1	WD60-LA
3	ADJUSTABLE OUTER ARM ASSEMBLY	1	WD60-LAAA
4	ADJUSTABLE BALE STOP	1	WD610-LAS
5	HYDRAULIC RAM (LIFT ARM)	1	Z01-01-AW
6	RAM BOTTOM PIVOT PIN	1	Z03-02-330
7	RAM TOP PIVOT PIN	1	Z03-01-905A
8	2" X 1/4" SPLIT PINS	3	Z03-21-29
9	LIFT ARM PIVOT C/W GREASE NIPPLE	2	Z03-01-905
10	M10 HEX HD SET X 25MM LONG (TUFLOCK)	3	Z26-061S
11	10MM DIA MACHINED FLAT WASHER	3	Z11-02-10
12	10MM DIA SPRING WASHERD	3	Z12-02-10
13	SPAREX PIN	1	Z03-04-73
14	SPAREX PIN	1	Z03-04-77
15	7/16" DIA LINCH PINS	2	Z03-22-06
16	SAFETY SUPPORT BAR	1	WD60-319
17	6MM DIA LINCH PIN	2	Z03-22-03
18	PLASTIC CAP	1	Z32-10
* 19	LIFT ARM SENSOR MOUNTING BRACKET	1	WD610-LSM
	* ON 'A' MODELS ONLY		

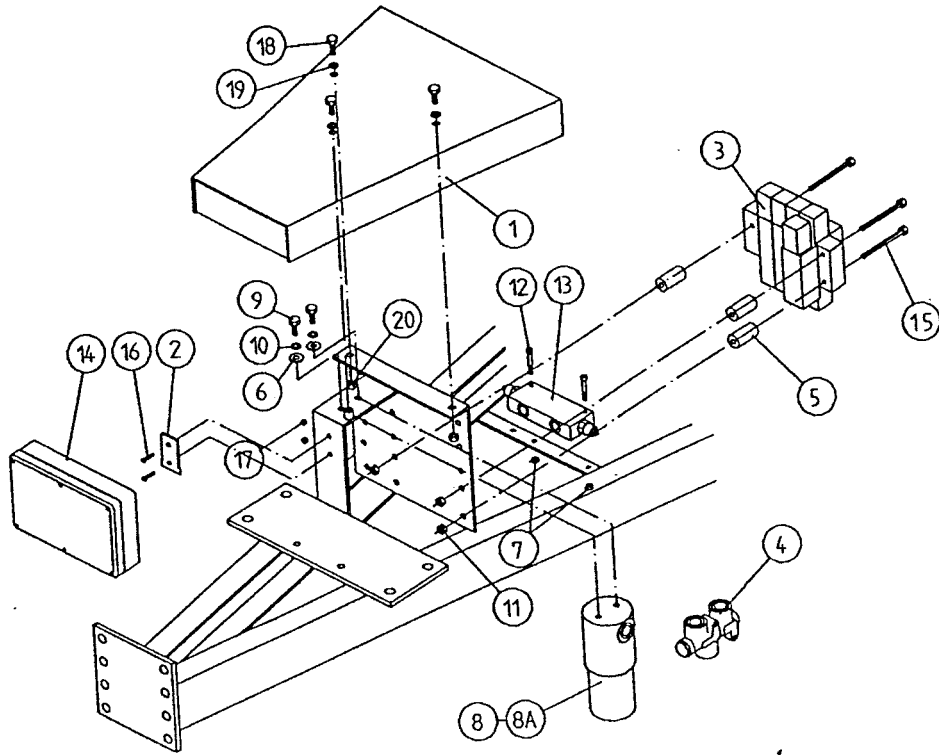
# TANCO AUTOWRAP 580S MODEL VALVE & COVER PLATE



FILE NAME: WD95PL47

ITEM No	DESCRIPTION	QTY	PART No
1	3 Bank spool valve	1	Z01-03-AS80
2	M.8 x 100 Hex bolt	3	Z26-057B
3	M.8 Locknut	3	Z23-08
4	Spacer	3	WD67-100
5	Valve cover plate	1	WD605H-19
6	10mm dia flat washer	3	Z10-02-10
7	10mm dia spring washer	3	Z12-02-10
8	M.10 x 20 Hex set	1	Z26-060S
9	M.10 x 25 Hex set	2	Z26-0611S
10	M.10 Hex nut	2	Z18-10

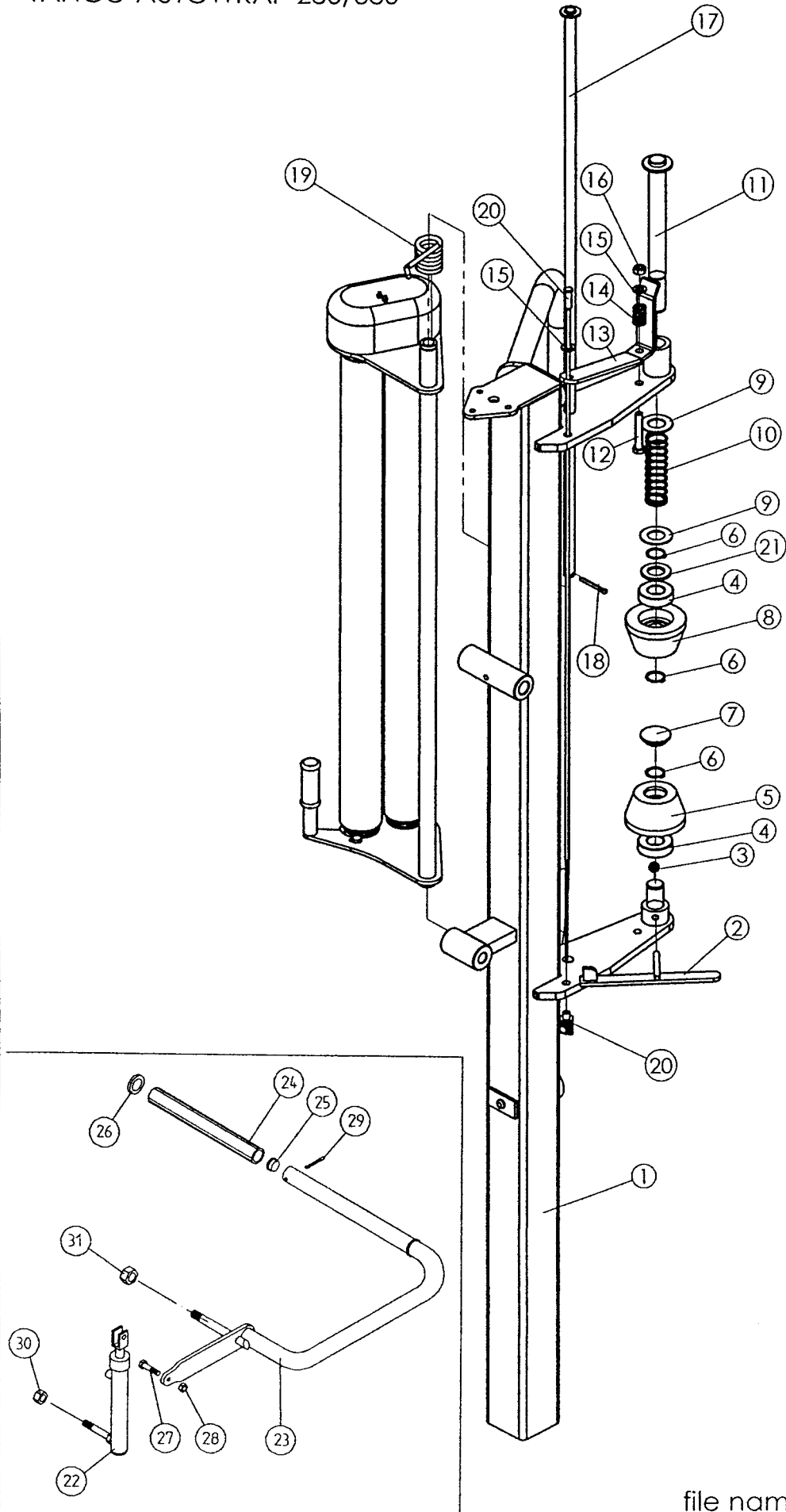
**TANCO AUTOWRAP 580A MODEL  
VALVE/JUNCTION BOX/FILTER & DIVERTER VALVE  
MOUNTING BRACKET ASSEMBLY**



**PARTS LIST**

ITEM NO:	DESCRIPTION:	QTY:	PART NO:
1	VALVE COVER PLATE ASSY	1	WD67-VCP
2	JUNCTION BOX MOUNTING BRACKET	1	ZLY-BRK
3	4 BANK SOLENOID VALVE	1	Z01-03-A550
4	FLOW DIVIDER	1	Z01-03-10-A6
5	SPACER	3	WD67-100
6	8MM DIA MUD FLAP WASHER	2	Z11-02-081
7	M6 LOCKNUT (NYLOCK)	2	Z32-06
8	OIL FILTER	1	Z01-24-08
8A	OIL FILTER ELEMENT	1	Z01-24-08E
9	M8 HEX HD SET X 25MM	2	Z26-040S
10	8MM DIA SPRING WASHER	2	Z12-02-08
11	M8 LOCKNUTS	3	Z23-08
12	M6 ALLEN HD SOCKET SCREW x 45mm	2	Z13-020-50
13	OVER-CENTRE VALVE	1	Z01-03-10-A8
14	JUNCTION BOX	1	ZLY-580A
15	M8 x 100mm HEX SET	3	Z26-057S
16	M4 CSK' SOCKET SCREW x 20mm	2	ZLY-S
17	M4 LOCKNUT	2	Z23-04
18	M10 x 20mm HEX SET	3	Z26-060S
19	10mm DIA SPRING WASHER	3	Z12-02-10
20	M10 HEX NUT	2	Z18-10

FILM DISPENSER MAST ASSEMBLY  
TANCO AUTOWRAP 280/580

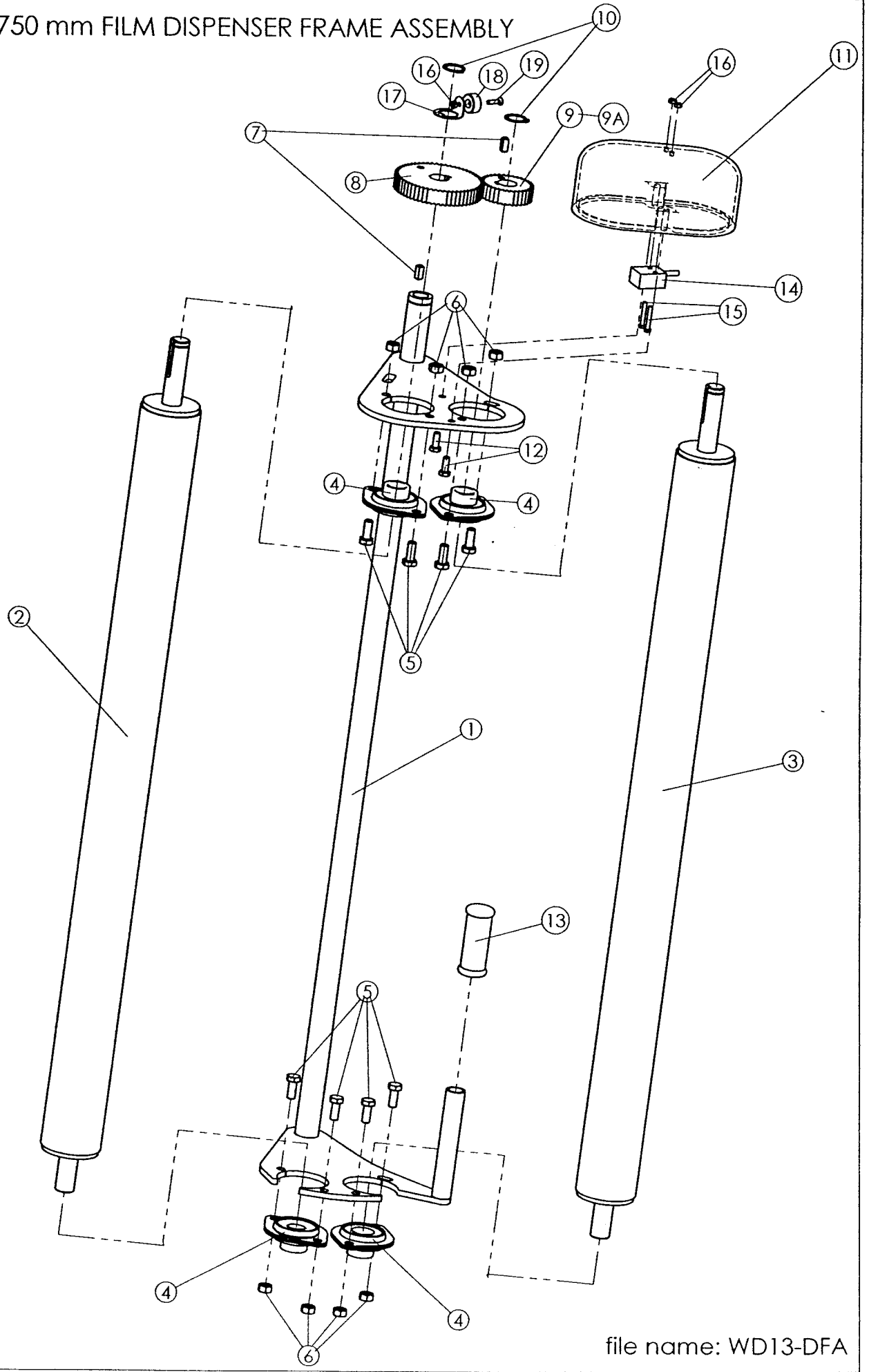




**DISPENSER MAST ASSEMBLY TANCO AUTOWRAP 280/580  
PARTS LIST**

<b>ITEM NO.</b>	<b>DESCRIPTION:</b>	<b>QTY:</b>	<b>PART NO:</b>
1	Dispenser mast	1	WD90-DMA
2	Bottom latch	1	WD404-DLB
3	M.8 Locknut	1	Z23-06
4	Bearing	2	Z06-AWRB
5	Bottom cone	1	Z06-45-02
6	Circlip for shaft OD 25 mm	3	Z28-525
7	Plastic cap 1 1/4"	1	Z32-15F
8	Upper cone	1	WD13-008
9	25mm dia flat washer	2	Z11-02-25
10	Spring	1	Z07-07
11	Top shaft	1	WD13-LPA
12	M10 x 60 Hex bolt	1	Z26-067B
13	Top latch	1	WD13-006
14	Spring	1	Z07-08
15	10mm dia flat washer	2	Z11-02-10
16	M.10 Locknut	1	Z23-10
17	Pivot pin	1	WD13-PPA
18	Split pin	1	Z03-21-14
19	Torsional spring	1	Z07-04N
20	Latch release wire kit	1	Z003-1200
21	25mm dia flat washer	1	Z10-02-25
22	Hydraulic ram ( Pull down )	1	Z01-01-AW25
23	Film pull down arm assembly	1	WD617-FPDA
24	Roller	1	WD60-866
25	1" G.B. Plastic cap	1	Z32-14
26	Retaining washer	1	WD60-859
27	M.12 x 50 Hex set	1	Z26-086S
28	M.12 Locknut	1	Z23-12
29	1/4" x 2" Split pin	1	Z01-23-29
30	M.16 Locknut	1	Z23-16
31	M.20 Locknut	1	Z23-20

# 750 mm FILM DISPENSER FRAME ASSEMBLY

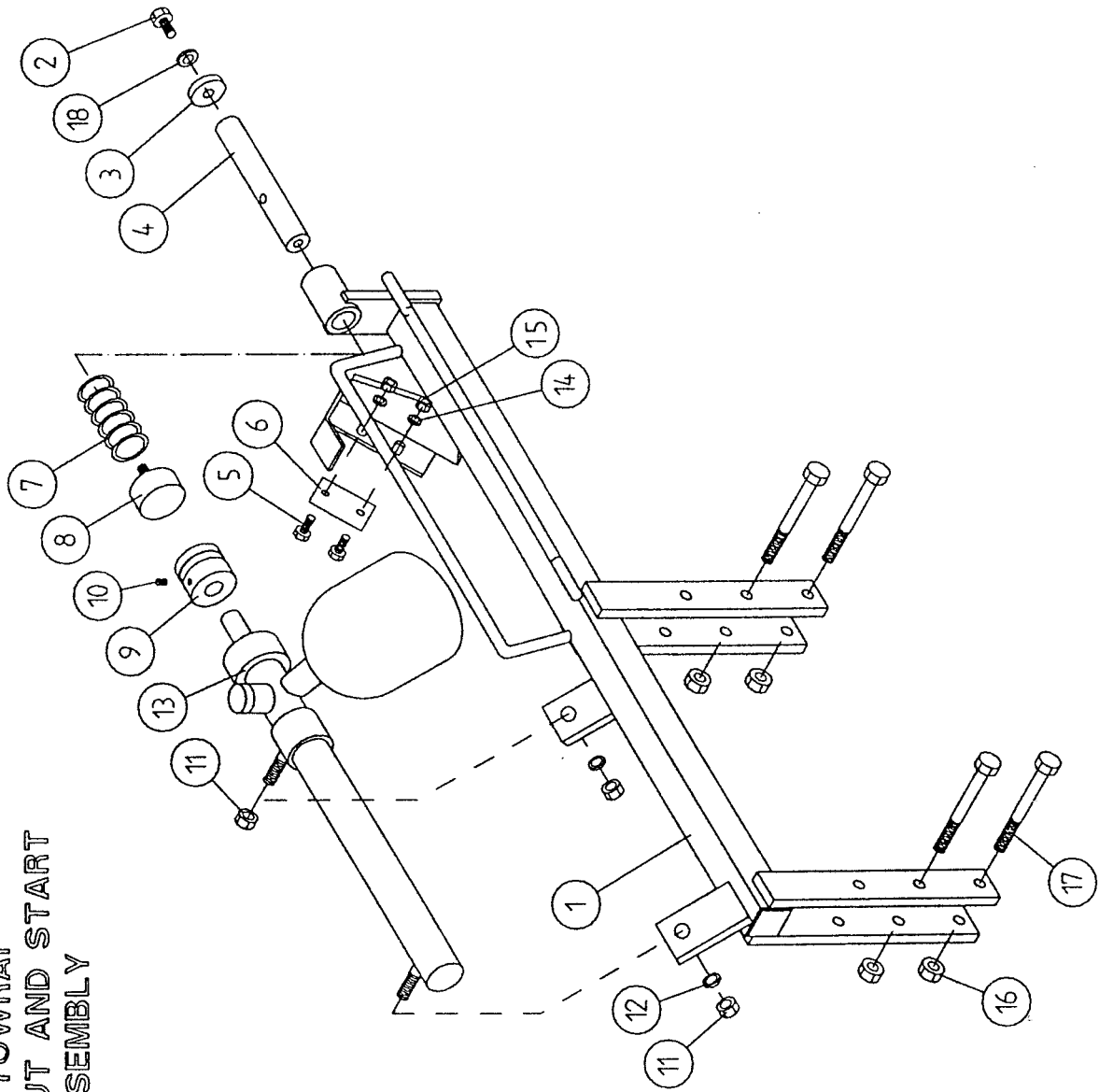


## 750 mm FILM DISPENSER FRAME ASSEMBLY PARTS LIST

ITEM NO.	DESCRIPTION:	QTY:	PART NO:	OPTION:
1	Film dispenser main frame	1	WD13-RFA	
2	Inner roller assembly	1	D617-IRA1	
3	Outer roller assembly	1	D617-ORA	
4	RHP SLF20A bearing	4	Z06-17	
5	M8 x 20mm hex set	8	Z26-039S	
6	M8 locknut	8	Z23-06	
7	6 mm sq. key steel x 20 mm long	2	WD67-KS20	
8	60 T gear	1	D617-G60	
9	39 T gear - 55% prestretch	1	D617-G39	
9A	35 T gear - 75% prestretch	1	D617-G35	
10	20 mm external circlip	2	Z28-520	
11	Dispenser gearbox cover	1	WD404-051	
12	M6 x 16 mm hex set	2	Z26-019S	
13	Plastic hand grip	1	Z32-16	
14*	Magnetic sensor	1	D606C-SS1	film break sensor
15*	M4 x 25 mm slotted cheese head	2	Z13-4-04x25	film break sensor
16*	M4 locknut	2	Z23-04	film break sensor
17*	Magnet mounting bracket	2	WD404-052	film break sensor
18*	Magnet round 20mm diam x 10 mm	2	D606C-SM1	film break sensor
19*	M4 x 20 mm countersunk set	2	Z13-125	film break sensor

\* Items marked with \* are required with the special option only

TANCO AUTOWRAP  
HYDRAULIC CUT AND START  
MAIN ASSEMBLY



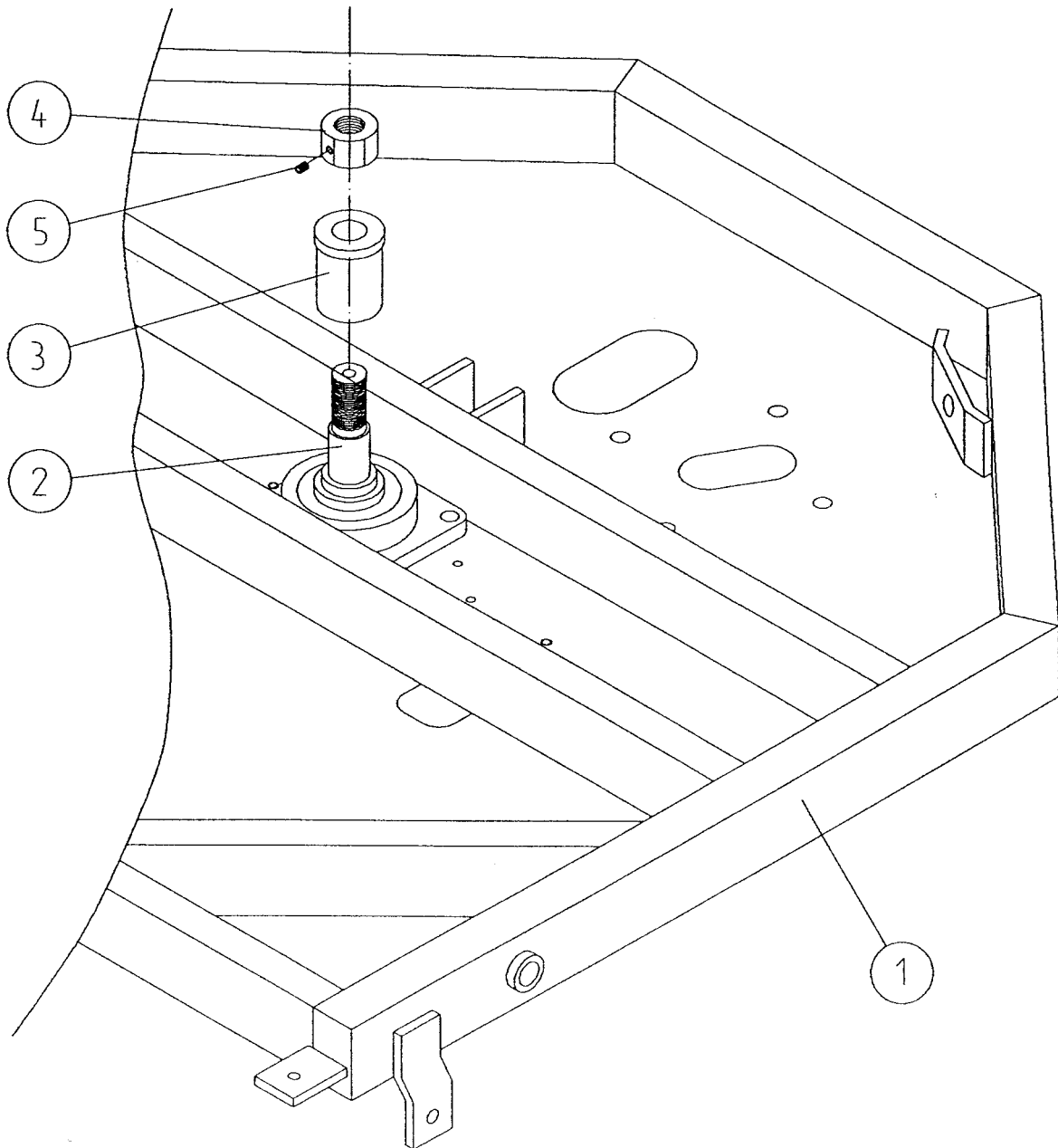
**TANCO AUTOWRAP  
HYDRAULIC CUT AND START UNIT  
PARTS LIST**

<b>ITEM NO.</b>	<b>DESCRIPTION</b>	<b>QTY</b>	<b>PART NO.</b>
1	HYDRAULIC CUT AND START MAIN FRAME	1	WD605H-MF
2	M10 x 25 HEX SET	1	Z26-061S
3	LOCKING COLLAR	1	Wi60-090
4	GRIPPER ROD	1	WD605H-13
5	H6 X 25 HEX SET	1	Z26-0405
6	BLADE	1	605-104
7	SPRING	1	Z07-49
8	GRIPPER PAD (RUBBER)	1	Z40-28
9	GRIPPER PAD	1	WD605H-15
10	M8 X 10 GRUB SCREW	1	Z28-008
11	M 14 HEX NUT	3	Z18-14
12	14MM SPRING WASHER	2	Z12-02-14
13	CUT & START HYDRAULIC RAM ACCUMULATOR	1	Z01-OI-AWH
14	8MM FLAT WASHER	2	Z11-02-08
15	M8 LOCK NUT	2	Z23-08
16	M 10 LOCK NUT	4	Z23-010
17	M10 X 75 HEX BOLT	4	Z26-069B
18	10mm DIA SPRING WASHER	1	Z12-02-10

TANCO AUTOWRAP  
TURNTABLE LOCKING ARRANGEMENT

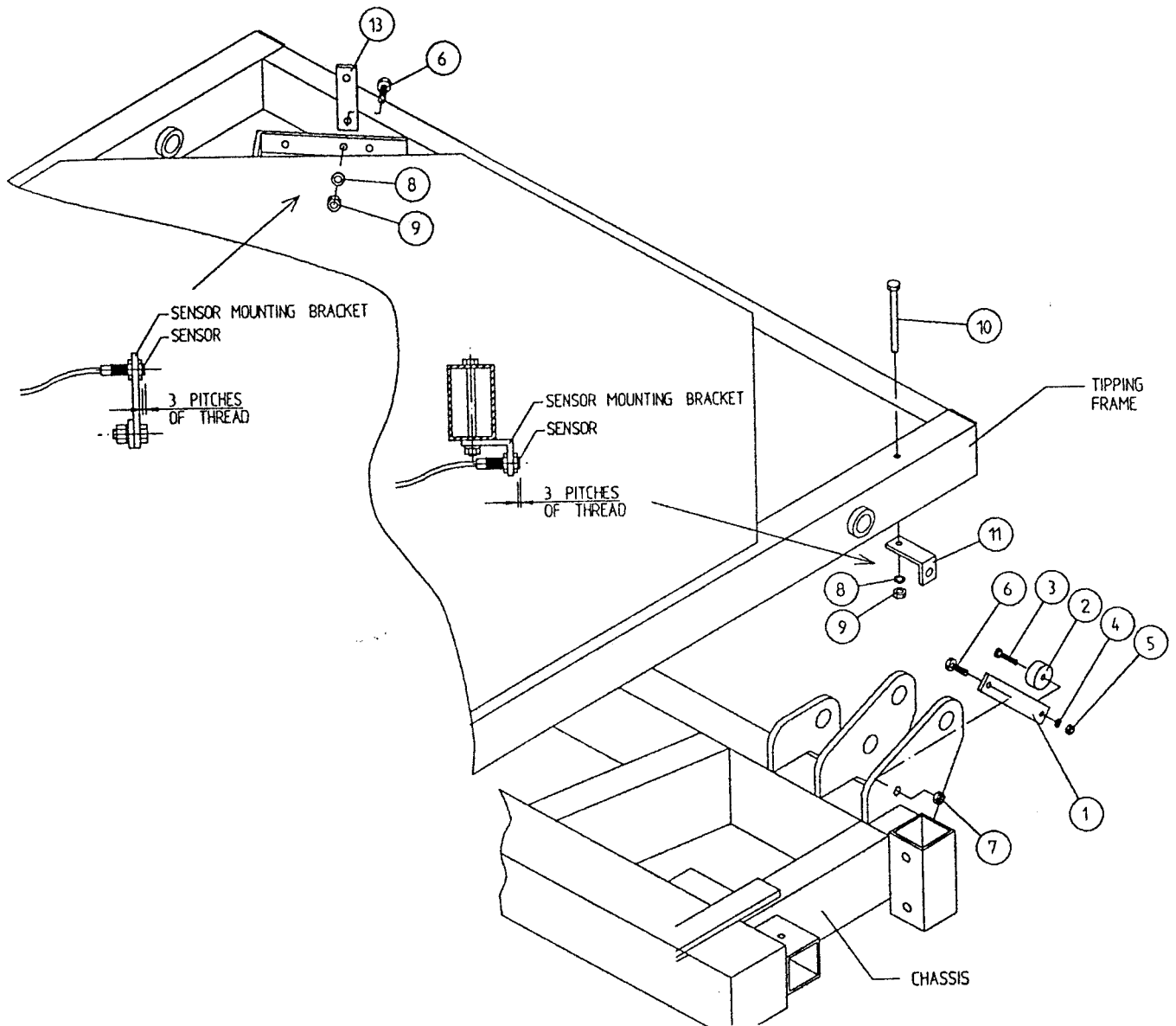
PARTS LIST

ITEM No	DESCRIPTION	QTY	PART No
1	Underside of tipping frame	1	WD67-TF
2	Turntable centre shaft	1	WD67-017
3	Spindle spacer	1	WD67-SS
4	1 1/4 " UNC Retaining nut	1	WD64-054
5	M.8 Grub screw x 6mm long	2	Z28-007



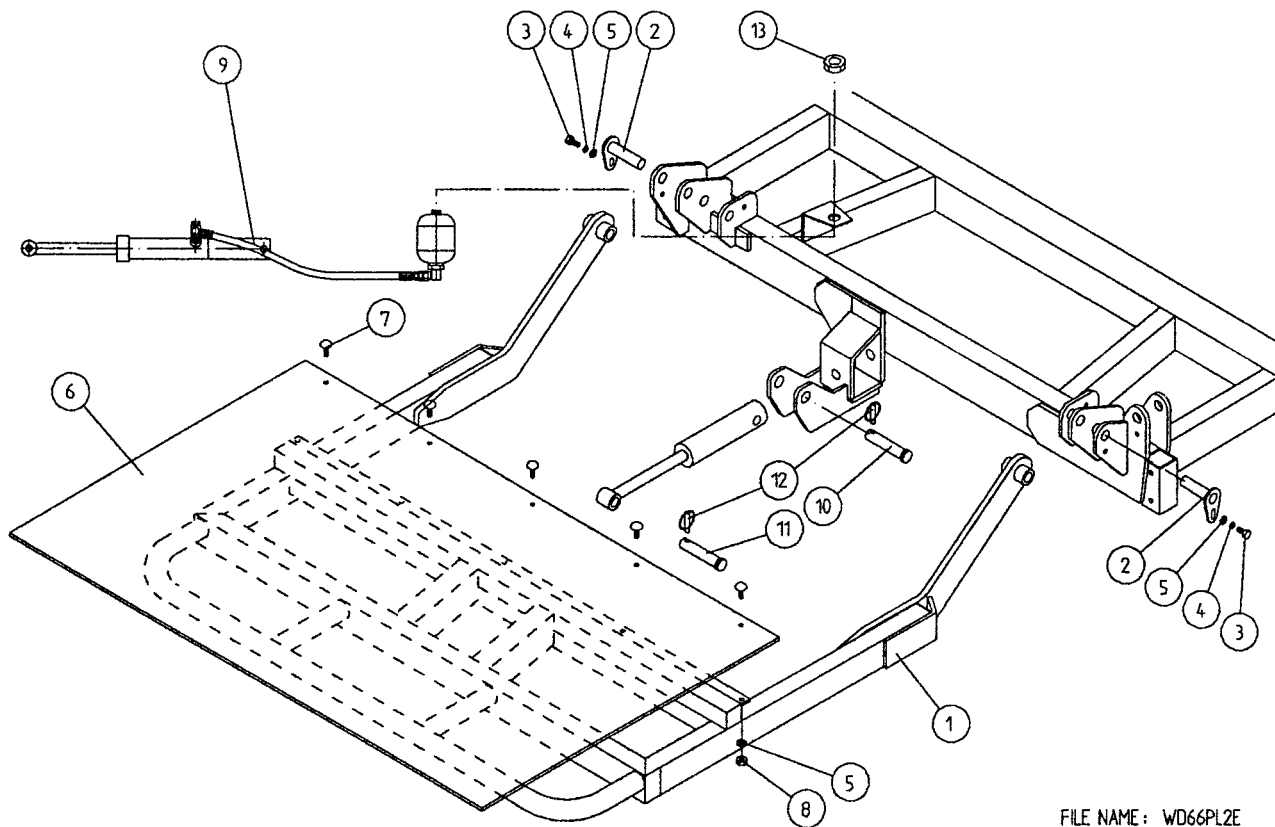
FILE NAME : WD64 - PL41

# TANCO AUTOWRAP CUT AND START SENSOR AND MAGNET MOUNTING BRACKETS



PARTS LIST		QTY	PART NO.
ITEM NO	DESCRIPTION		
1	MAGNET MOUNTING BRACKET	1	WD605-165
2	MAGNET	1	D6034
3	M6 HEX HD. SET x 30mm LONG	1	Z26-022S
4	6mm DIA FLAT WASHER	1	Z12-02-06
5	M6 LOCKNUT	1	Z23-06
6	M8 HEX HD. SET x 25mm LONG	2	Z26-040S
7	M8 LOCKNUT (NYLOCK)	1	Z23-08
8	8mm DIA SPRING WASHER	2	Z12-02-08
9	M8 HEX NUT	2	Z18-08
10	M8 HEX HD. SET x 100mm LONG	1	Z26-057S
11	SENSOR MOUNTING BRACKET	1	WD605-58
12	SENSOR MOUNTING FLAT	1	WD605-164

# TANCO AUTOWAP HYDRAULIC BALE RAMP

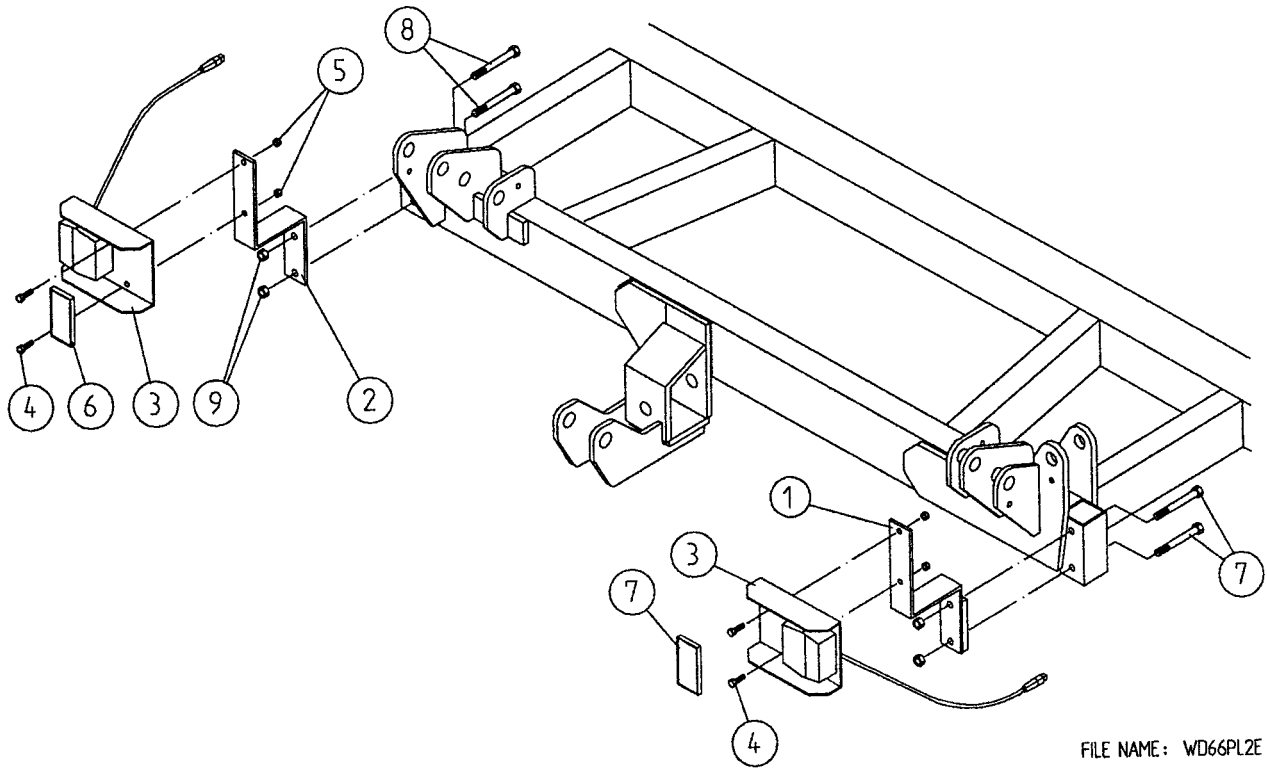


FILE NAME: WD66PL2E

ITEM NO.	DESCRIPTION:	QTY:	PART NO:
1	Hydraulic bale ramp. Main frame	1	WD65-HBRF
2	Ramp main pivot pin c/w grease nipple	2	Z03-01-905
3	M.10 x 20 Hex set	2	Z26-060S
4	10mm dia flat washer	2	Z11-02-10
5	10mm dia spring washer	12	Z12-02-10
6	Bale mat	1	Z05-02-BRH
7	M.10 x 30 Cup Hd. Sq bolts	5	Z13-112
8	M.10 Hex nut	5	Z18-10
9	Hydraulic ram c/w Accumulator	1	Z01-01-AWD
10	Sparex Pin	1	Z03-04-74
11	Sparex Pin	1	Z03-04-73
12	7/16" dia Linch Pin	2	Z03-22-06
13	M.28 x 1.5 Pitch Hex nut	1	Z18-28



## TANCO AUTOWRAP 580 / 1080 LIGHTING KIT



FILE NAME: WD66PL2E

ITEM No	DESCRIPTION	QTY	PART No
1	Light mounting bracket R.H.S.	1	WD60-LMB
2	Light mounting bracket L.H.S.	1	WD60-899
3	Light cluster	2	Z05-30
4	M.8 x 25 Hex set	4	Z26-040S
5	M.8 Locknut	4	Z23-08
6	Reflector	2	Z04-621
7	M.12 x 100 Hex bolt	2	Z26-092B
8	M.12 x 90 Hex bolt	2	Z26-091B
9	M.12 Locknut	4	Z23-12